



SUPER STROBE SILVERLINE OPERATION MANUAL

INTRODUCTION

This is a high powered and easily installed strobe ,incorporates adjustable SPEED control and remote jack, which enables to adjust flash speed by two means of internal-control and external -control modes. In internal-control mode, adjust SPEED control to change flash speed ;in external-control mode, flash speed is controlled by external strobe control.

TECHNICAL SPECIFICATION

POWER INPUT	AC 220-240V~50-60Hz, 160W max.
FUSE	(Internal) F2A 250V 5x20mm
FLASH TYPE	BT-106H
LAMP LIFE	500 thousand flashes
FLASH RATE	1-15 flashes per second
REMOTE CONTROL	1/4" mono jack x2
DIMENSIONS	250x320x210mm
WEIGHT	3.11kg

CONTROLS AND FUNCTIONS

1. POWER SWITCH

2. SPEED control

This control adjusts the flash speed. Turn the control clockwise to increase flash speed, maximum 15 flashes per second; turn the control counter clockwise to decrease the flash speed, minimum 1 flash per second.

3. POWER INPUT

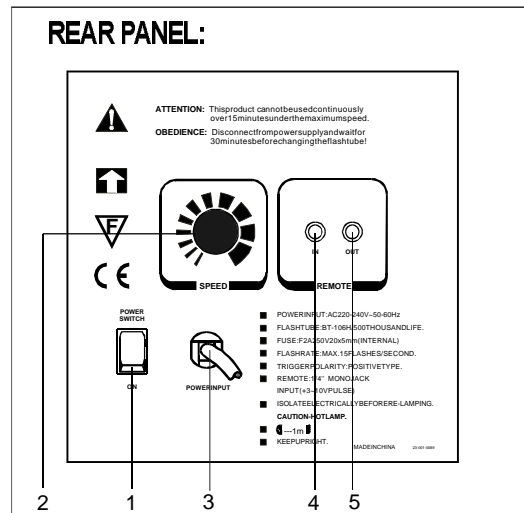
Use to connect to appropriate power supply.

4. Remote input jack

Use to connect to external strobe controller via 1/4" mono jack.

5. Remote Output jack

Use to connect to another SP-106MR via 1/4" mono jack.



OPERATION

1. Please confirm power input is matched with that specified on this unit.
2. Plug in power cord to turn the power on.
3. This unit has two operating modes, including internal-control and external-control modes.

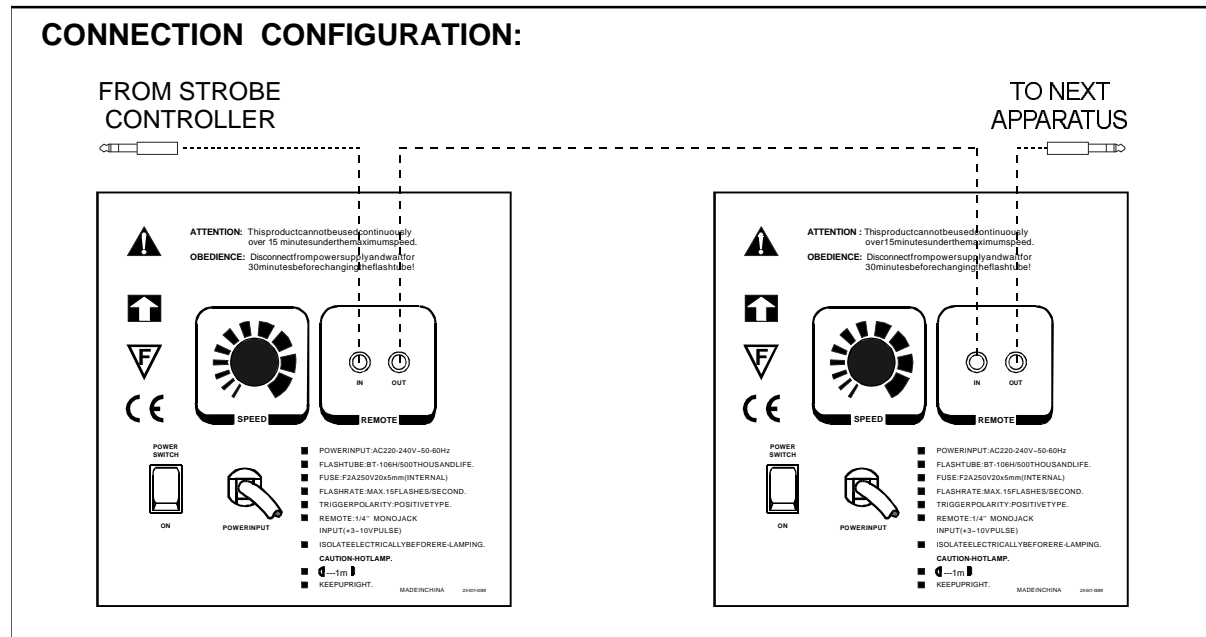
Internal-control mode

Adjust **SPEED control** to select desired flash speed, flash speed can vary within the range of 1-15 flashes per second.



External-control mode

Connect this unit to an external strobe controller via 1/4" mono jack, flash speed will be controlled by the strobe controller and internal **SPEED control** is defeated; Meanwhile, connect this unit to an external strobe in the same way, both units will flash synchronously and be controlled by the strobe controller.



4. For safety reasons, please turn off the power switch after using, and unplug power cable from AC power outlet.

WARNING!!!

1. This apparatus must be earthed.
2. Avoid direct eye exposure.
3. To prevent fire or electric shock hazard, do not expose this apparatus to rain or moisture.
4. Replace the flash tube and internal fuse with the same type.
5. Disconnect the power supply and wait for 30 minutes before changing the flash tube.
6. This apparatus can not be used continuously over 15 minutes under the maximum speed.